

PTC recognises the imperative to protect and preserve the environment for current and future generations, and we are steadfast in our pursuit of sustainable practices that minimise our ecological footprint.

PTC's targets align with the Whole-of-Government GreenGov.SG targets.

TARGETS

- Peak emissions by 2025.
- 10% reduction in Energy Utilisation Index (EUI) by 2030, compared to average of 2018-2020 levels.
- 10% reduction in Water Efficiency Index (WEI) by 2030, compared to 2022 levels.
- 30% reduction in Waste Disposal Index (WDI) by 2030, compared to 2022 levels.

EMISSIONS

Emissions

FY18-20 (Baseline)

0.015 kilotonnes CO₂e

FY21

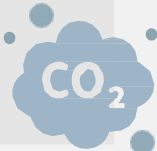
0.016 kilotonnes CO₂e

FY22

0.016 kilotonnes CO₂e

FY23

0.015 kilotonnes CO₂e



PTC has adopted the Greenhouse Gas (GHG) Protocol Corporate Standard to disclose our carbon emissions.

Electricity consumption was converted into carbon dioxide equivalent (CO₂e) units using the Grid Emission Factor (GEF) provided by EMA.

Emissions for 2023 were calculated using GEF from 2022 as 2023 figures were not available at this time of our disclosure.

As PTC's operations do not involve any direct emissions occurring from owned or controlled sources (Scope 1), there are no Scope 1 emissions reported. The indirect emissions from the use of purchased electricity in standard buildings (Scope 2) are reported.

ELECTRICITY

Electricity Consumption

FY18-20 (Baseline)

36416 kWh

FY21

38082 kWh

FY22

38674 kWh

FY23

36758 kWh

Energy Utilisation Index

FY18-20 (Baseline)

79.59 kWh/m²

FY21

45.12 kWh/m²

FY22

45.82 kWh/m²

FY23

43.55 kWh/m²



EUI is defined as the total electricity consumed by a facility in one year divided by its total gross floor area.

The increase in electricity from 2021 to 2023 was attributed to relocating to a bigger office space.

POLICIES & PRACTICES

We have adopted energy saving measures such as using energy efficient LED lights in the office, and display reminder notices near light switches to prompt staff and guests to turn off the lights upon leaving.

WATER

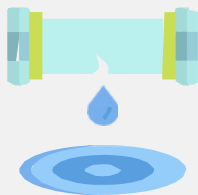
WEI is defined as the water consumption divided by the number of headcount / occupants.

WEI methodology only includes water consumption at our offices, and is based on GreenGov.SG metrics.

The baseline WEI year for our office differs from other indicators in FY22, as water taps were only introduced in our office premises in February 2021. This adjustment better reflects our operational norms, particularly as more employees returned to the office after the COVID-19 pandemic.

POLICIES & PRACTICES

PTC monitors water usage and encourages staff to reduce washing time and have installed water aerators to reduce water consumption.



Water Consumption

FY22 (Baseline)

9.69 m³

FY23

10.57 m³



Water Efficiency Index

FY22 (Baseline)

1.59 litres/person/day

FY23

1.73 litres/person/day

Our total water consumption has also shown an upward trend from FY2022 to FY2023, attributable to increased washing of reusable containers and cups to minimize disposable waste, and the higher number of visitors and colleagues from other agencies who utilize our meeting rooms. With water taps and coffee machines available for their use, this has contributed to greater water usage.

WASTE

WDI is defined as the total waste disposed of per day divided by the total number of public officer headcount including visitors to the premises.

As PTC's waste disposal is collected centrally, WDI methodology currently only includes paper consumption at our offices.

We are exploring the implementation of weighing disposed waste to improve the accuracy of our data.

POLICIES & PRACTICES

PTC encourages paperless operations and officers print only when necessary or recycle unwanted print-outs. Office printer settings are also set to default double-sided printing to minimise paper consumption.



Waste Consumption

FY22 (Baseline)

188.74 kg

FY23

150.82 kg



Waste Disposal Index

FY22 (Baseline)

0.031 kg/person/day

FY23

0.025 kg/person/day